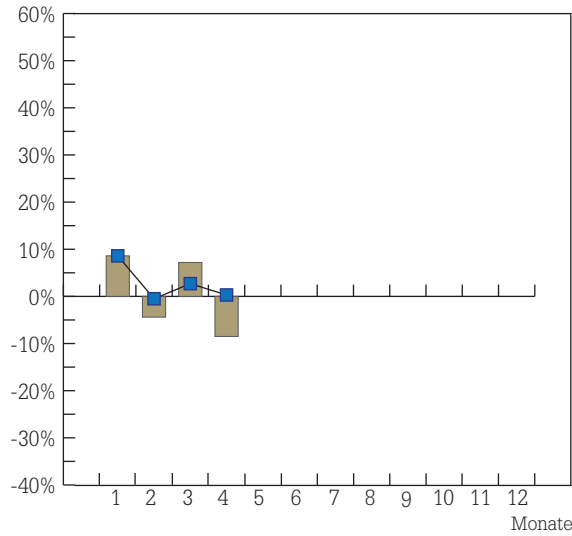


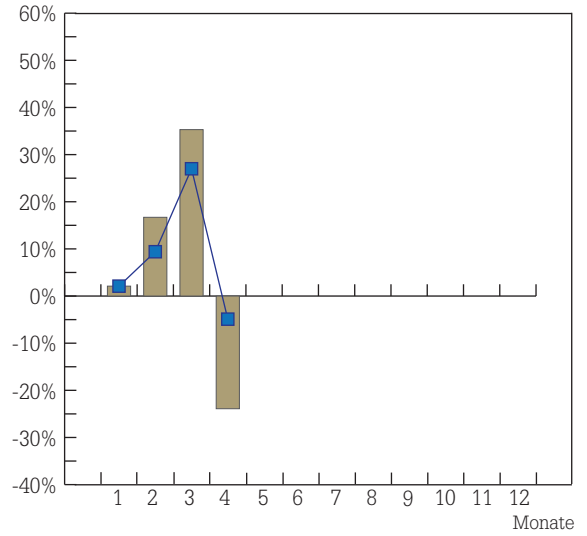
# Reifenmarkt Deutschland – Entwicklung 2017

## Pkw-Sommerreifen (inklusive Ganzjahresreifen)

**Sell-in**

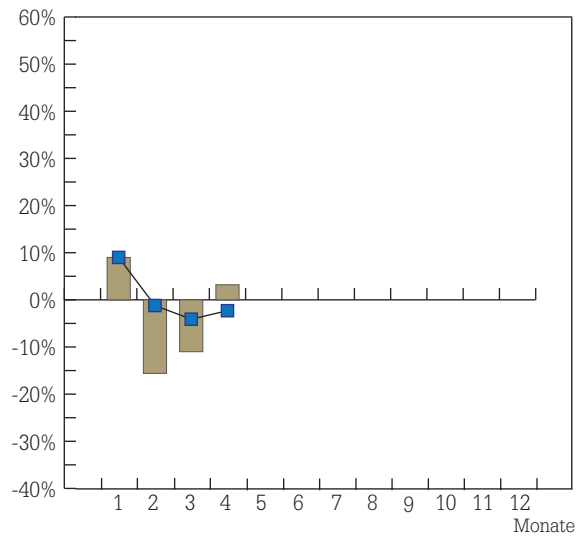


**Sell-out**

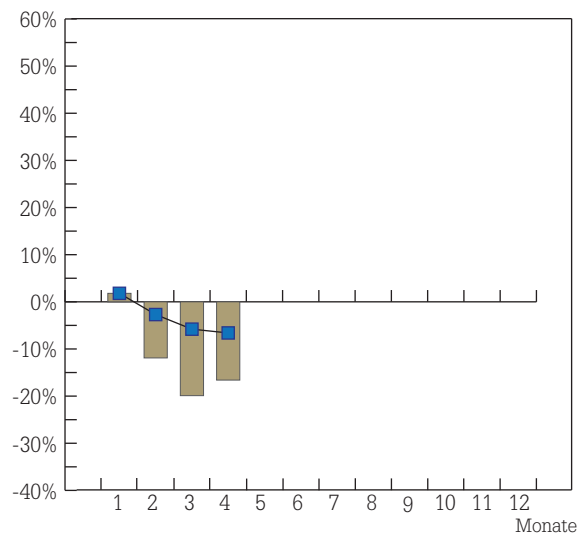


## Pkw-Winterreifen

**Sell-in**

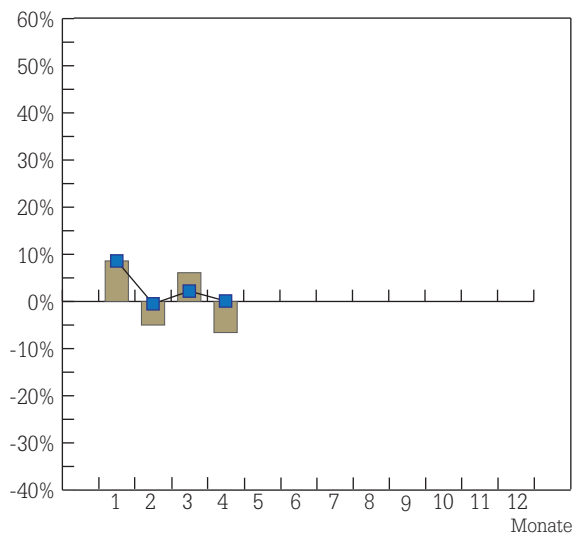


**Sell-out**

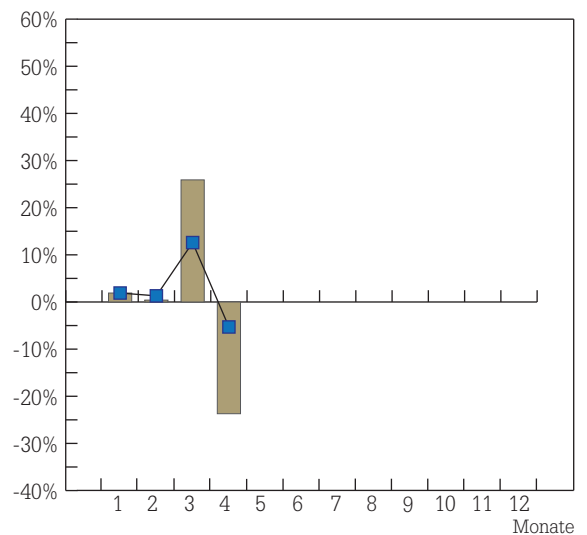


## Pkw-Reifen gesamt

**Sell-in**



**Sell-out**



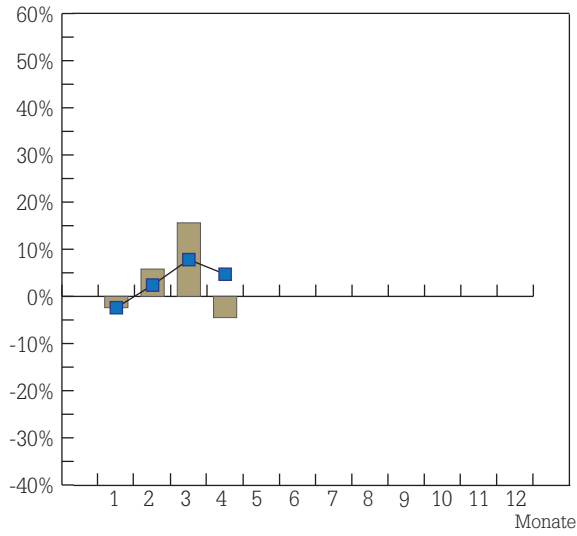
■ Sell-in/Sell-out (Monat)

—■ Sell-in/Sell-out (kumuliert)

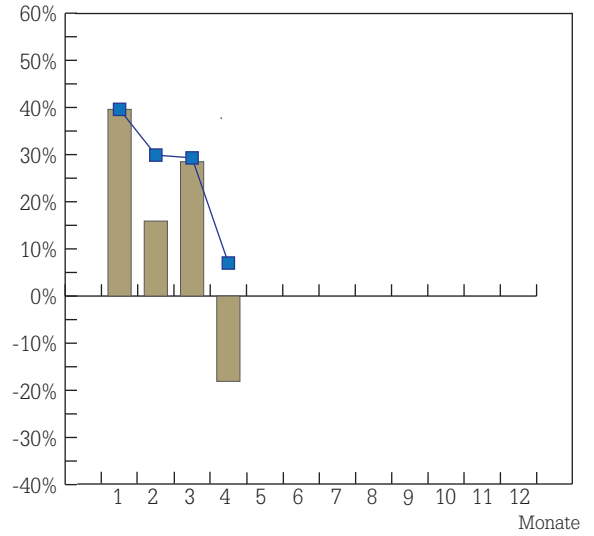
# Reifenmarkt Deutschland – Entwicklung 2017

## 4x4-/Offroadreifen

**Sell-in**

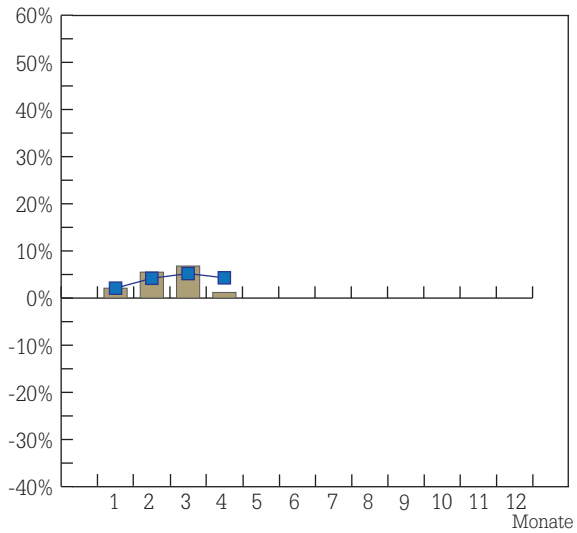


**Sell-out**

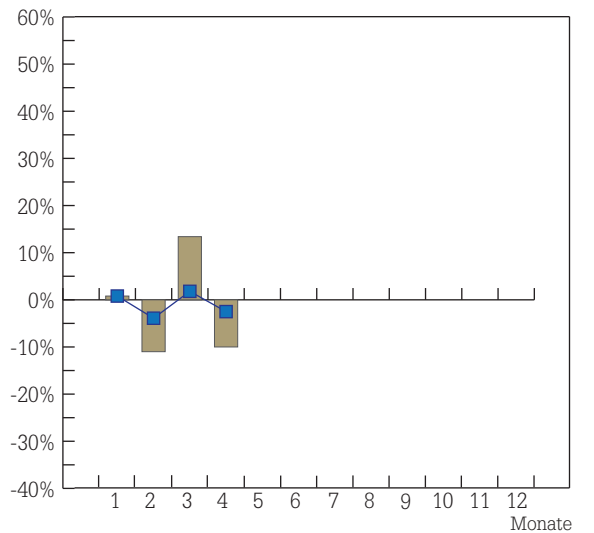


## L.Lkw-Reifen

**Sell-in**

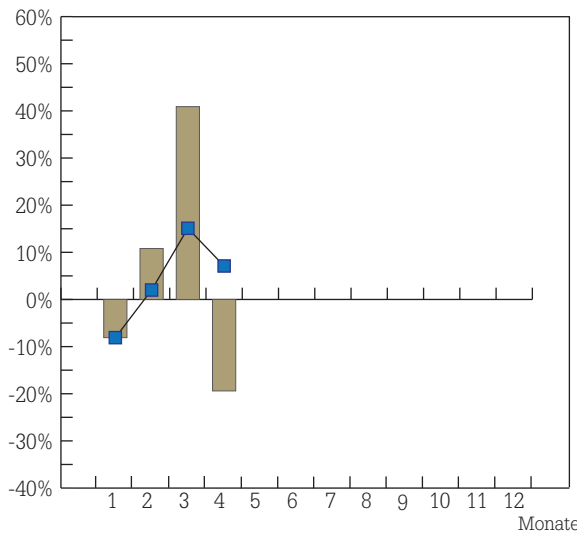


**Sell-out**

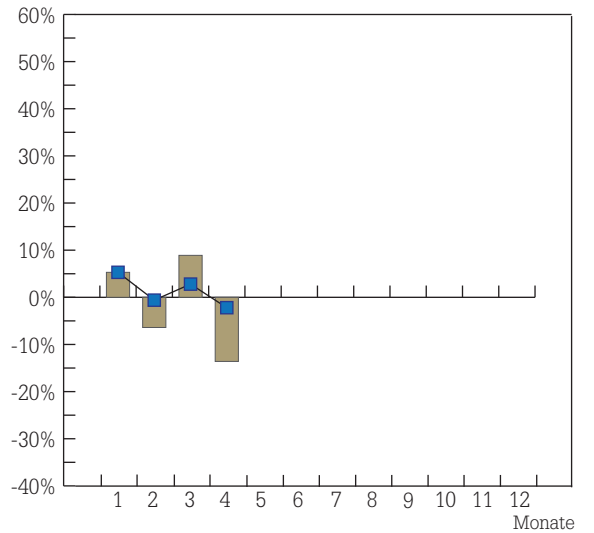


## Lkw-Reifen

**Sell-in**



**Sell-out**



■ Sell-in/Sell-out (Monat)

■ Sell-in/Sell-out (kumuliert)