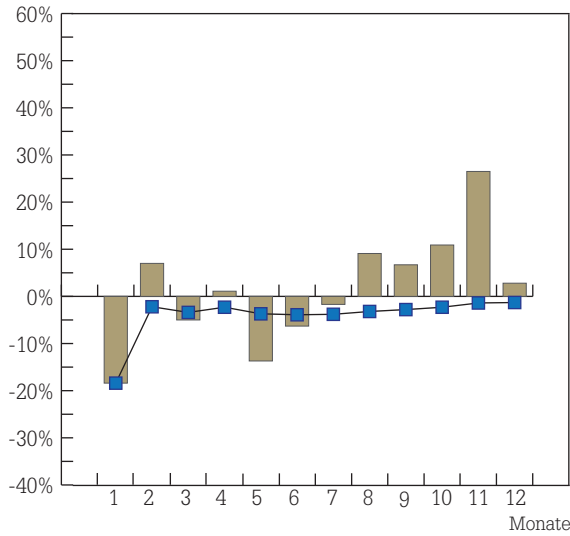


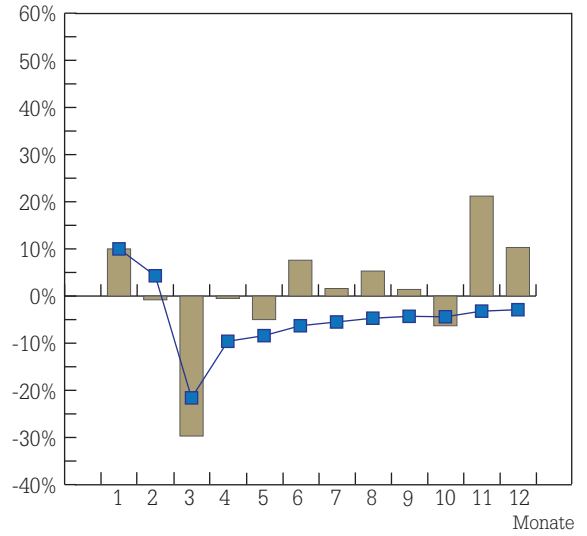
Reifenmarkt Deutschland – Entwicklung 2016

Pkw-Sommerreifen (inklusive Ganzjahresreifen)

Sell-in

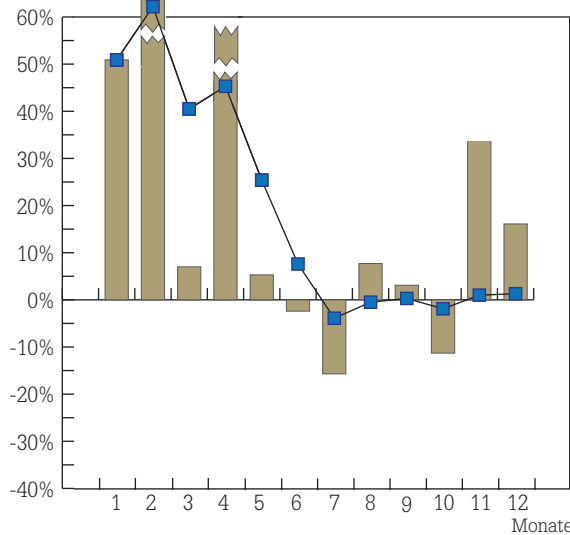


Sell-out

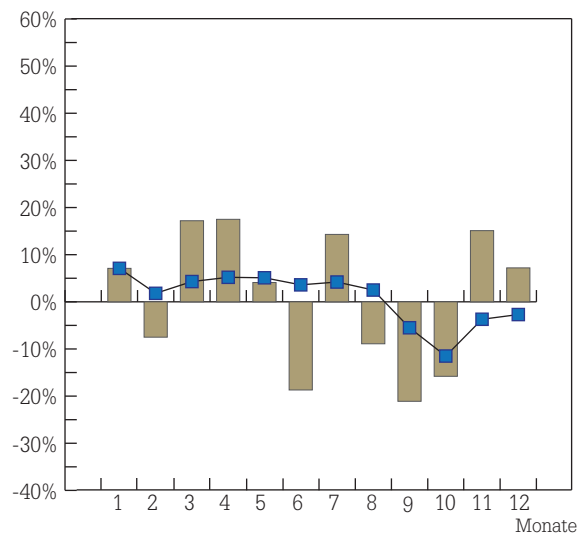


Pkw-Winterreifen

Sell-in

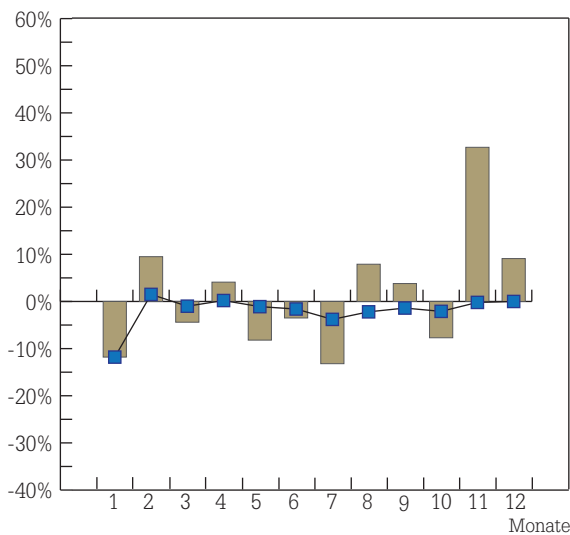


Sell-out

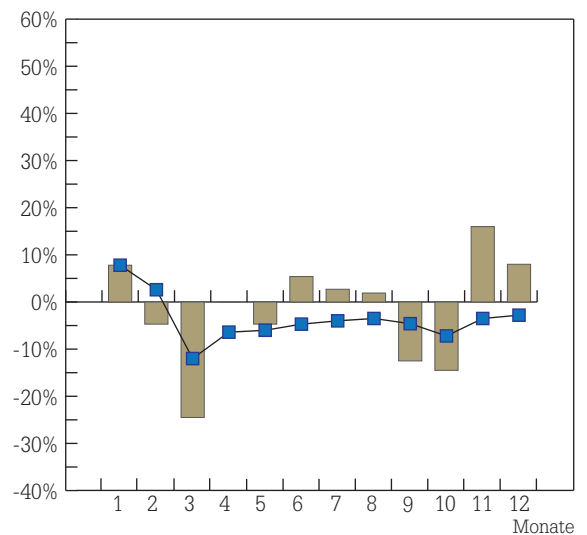


Pkw-Reifen gesamt

Sell-in



Sell-out



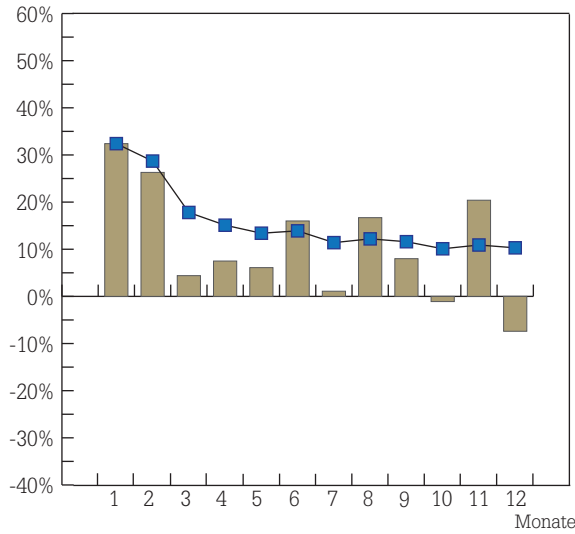
■ Sell-in/Sell-out (Monat)

—■ Sell-in/Sell-out (kumuliert)

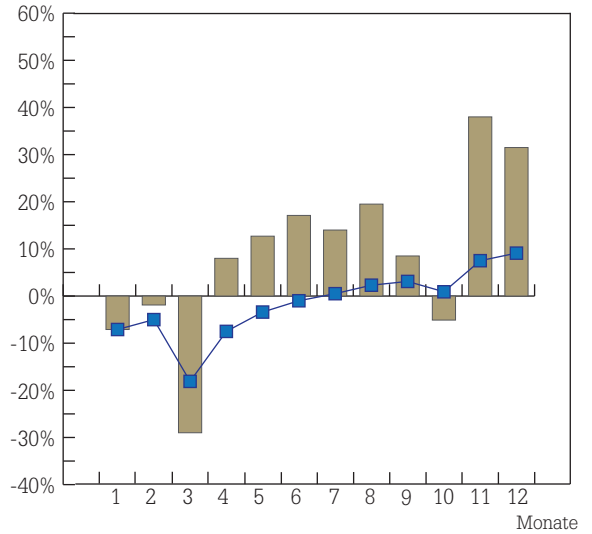
Reifenmarkt Deutschland – Entwicklung 2016

4x4-/Offroadreifen

Sell-in



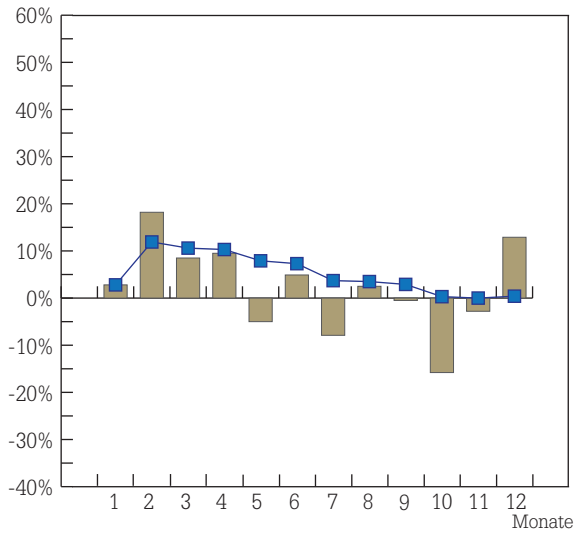
Sell-out



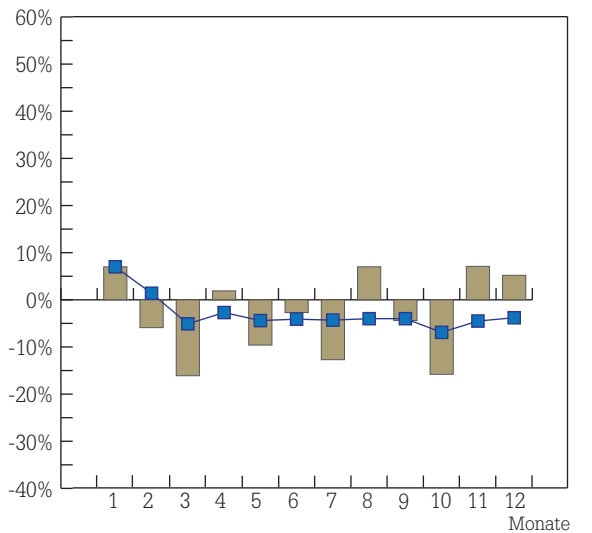
Sell-in (kumuliert)

L.Lkw-Reifen

Sell-in

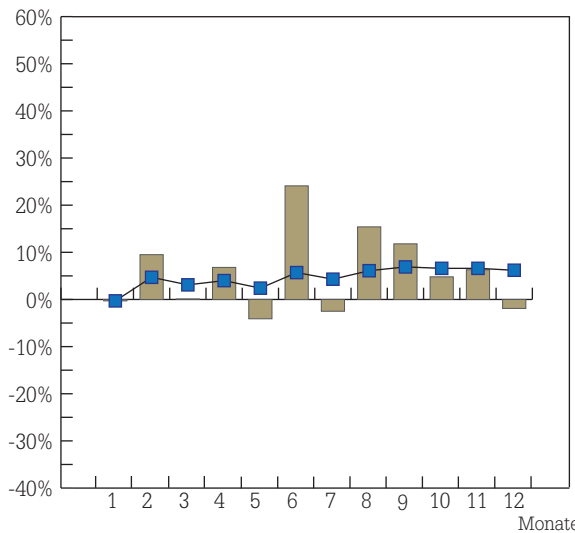


Sell-out

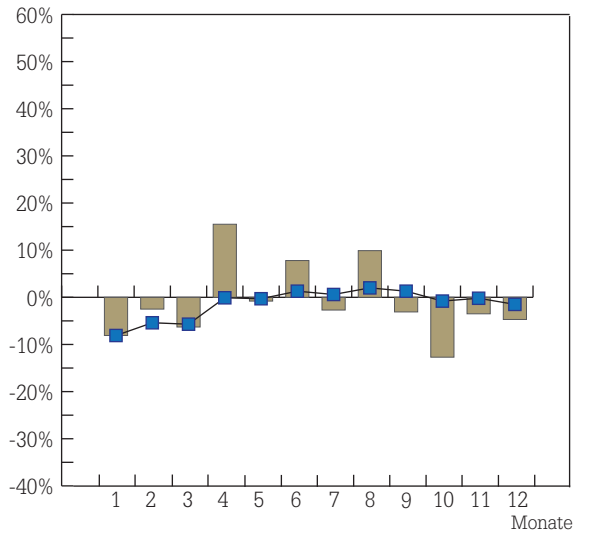


Lkw-Reifen

Sell-in



Sell-out



■ Sell-in/Sell-out (Monat)

—■— Sell-in/Sell-out (kumuliert)