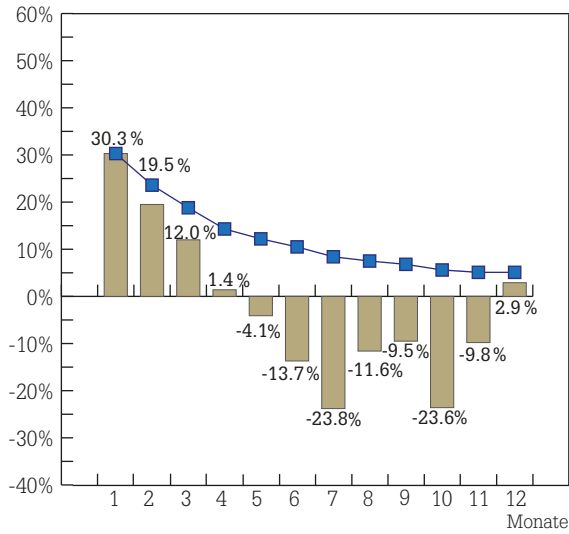


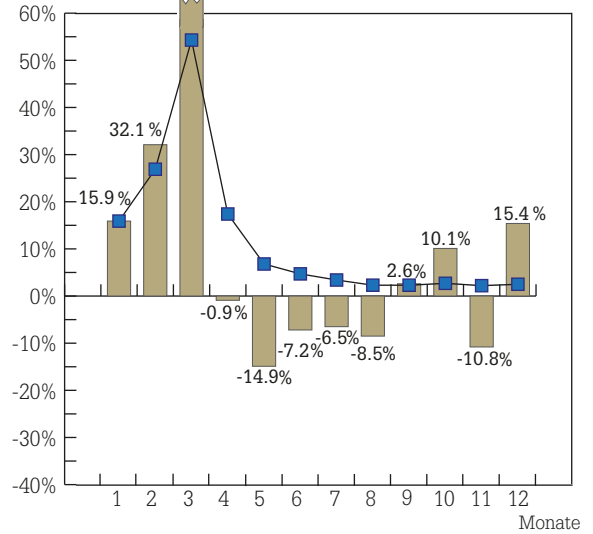
Reifenmarkt Deutschland – Entwicklung 2014

Pkw-Sommerreifen

Sell-in

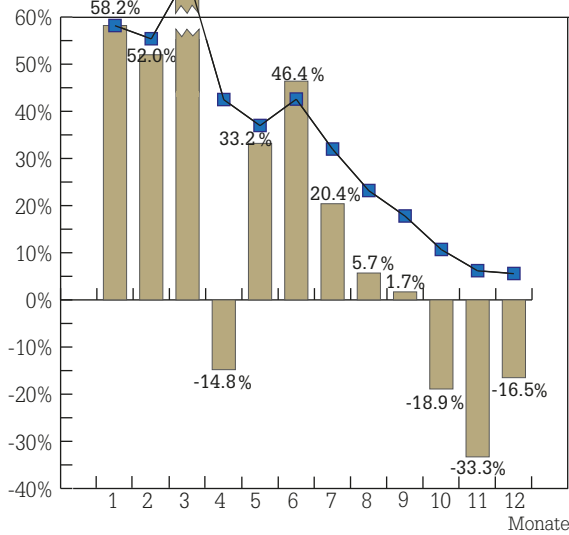


Sell-out

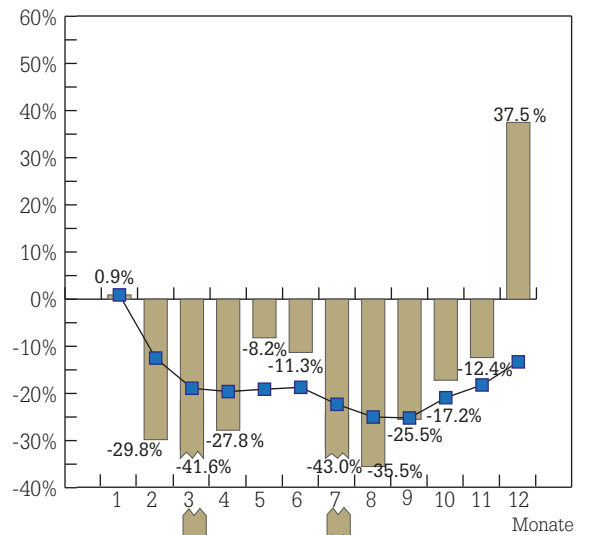


Pkw-Winterreifen

Sell-in

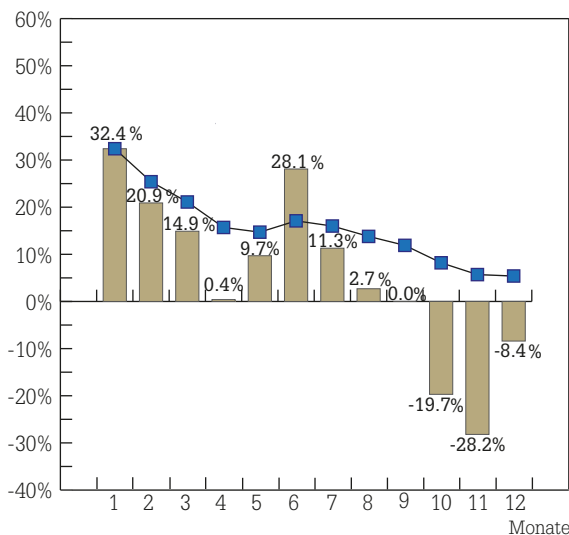


Sell-out

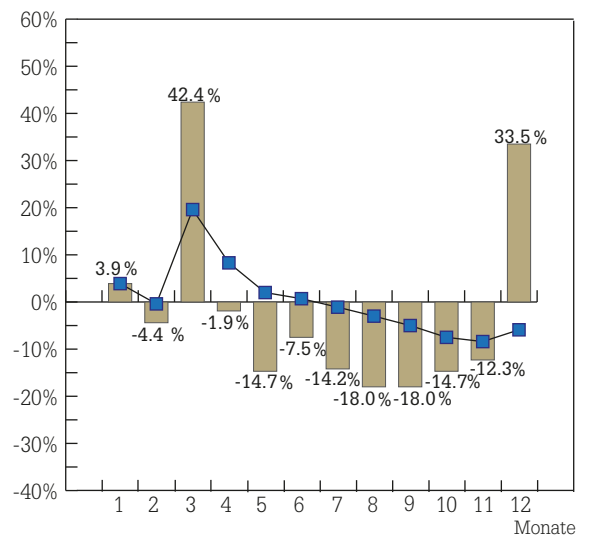


Pkw-Reifen gesamt

Sell-in



Sell-out



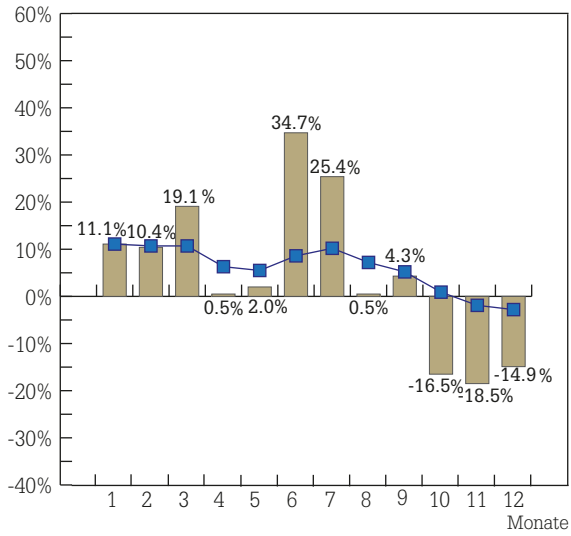
■ Sell-in/Sell-out (Monat)

— Sell-in/Sell-out (kumuliert)

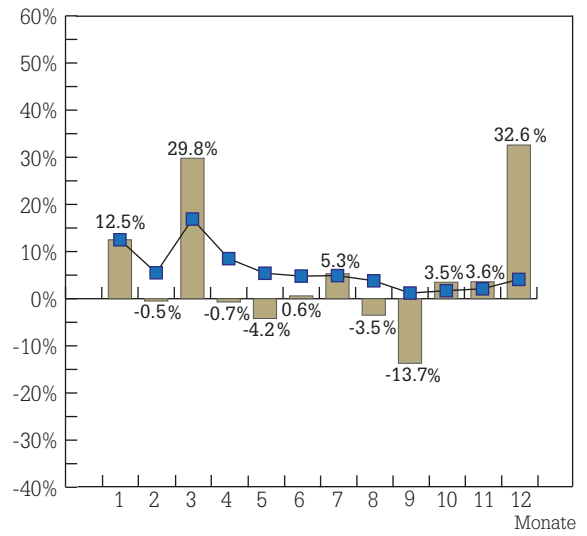
Reifenmarkt Deutschland – Entwicklung 2014

4x4-/Offroadreifen

Sell-in

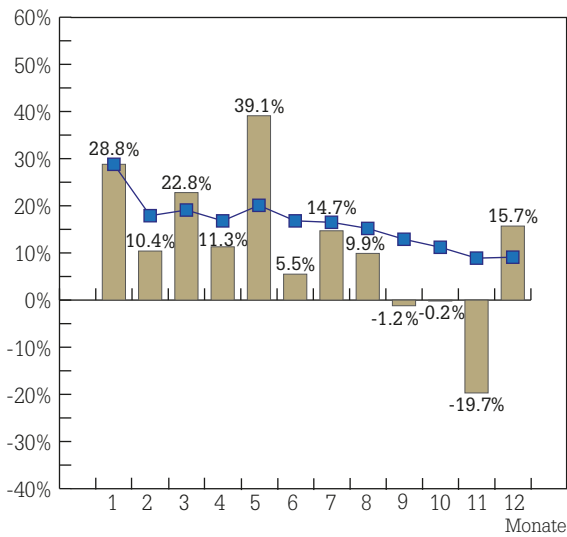


Sell-out

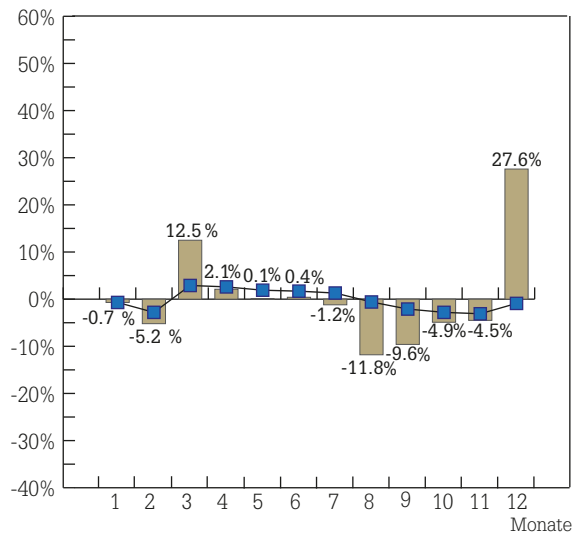


LLkw-Reifen

Sell-in

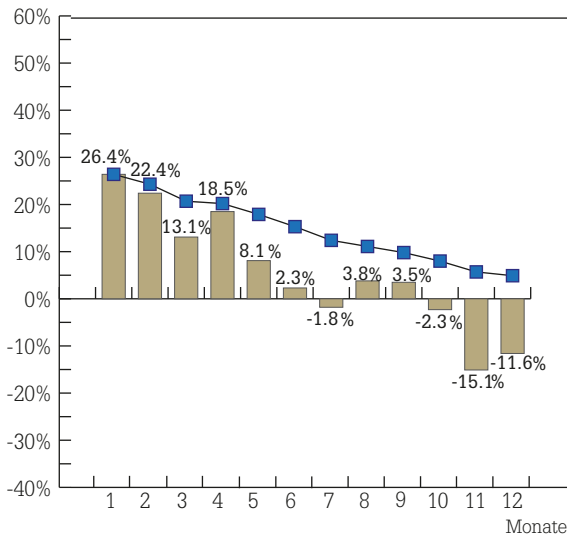


Sell-out

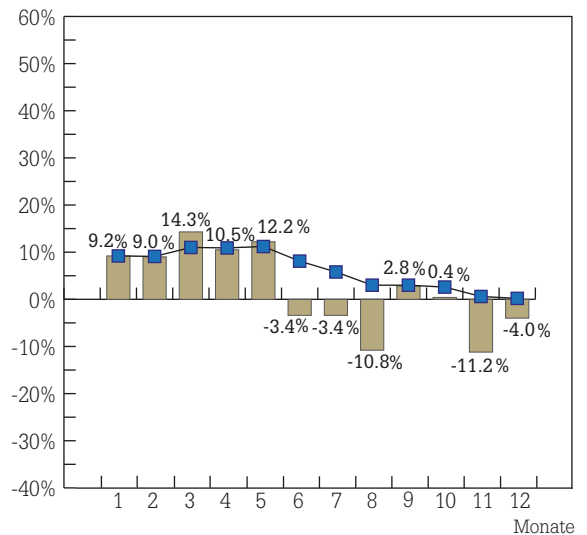


Lkw-Reifen

Sell-in



Sell-out



■ Sell-in/Sell-out (Monat)

—■ Sell-in/Sell-out (kumuliert)